



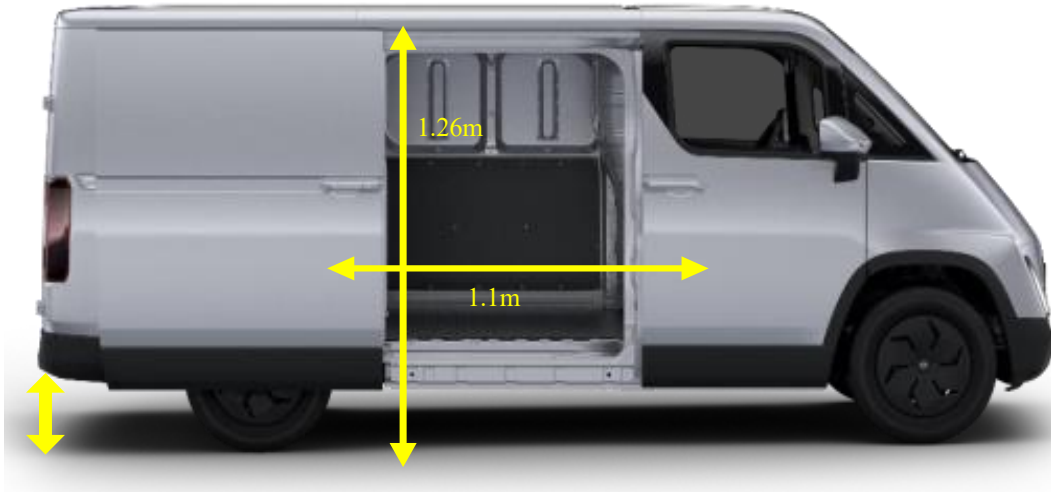
Vehicle parameters of CAVAN C1



ONE MILE ONE SMILE

- ❑ LHD-SWVTA (READY) /WVTA (2026.2)
- ❑ RHD-GB (2026.3)

Model	CAVAN C1		
Specification			
GVW (kg)	2900	3125	3235
Curb weight (kg)	1650	1750	1870
Payload (kg)	1250	1375	1365
Wheelbase	3100	3400	3400
Overall dimensions (mm)	4885×1810×1960	5185×1810×1960	5185×1810×2160
Cargo box dimensions (mm)	2800×1760×1450	100×1760×1450	100×1760×1650
Driving range-WLTP (km)	270	258	333
Brake system	hydraulic brakes		
Battery			
Battery Brand	CATL		
Type of the battery	LFP		
Capacity of the battery (kWh)	50.23	50.23/66.67	50.23/66.67
Charging mode	DC/AC		
DC SOC20%-80%	40min	40/60min	40/60min
AC SOC20%-100%	5h	5/6.5h	5/6.5h
Charging Base	CCS2		
Motor			
Rated/peak power (kW)	55/125		
Rated torque/peak torque (N·m)	105/210		
Basic equipment			
FCW	●		
LDW	●		
LDP	●		
ISA	●		
ACC	●		
BSD	●		
V2L	○		



- ❑ large space: 685mm short front suspension, 500mm super low cargo bed
- ❑ large carrying capacity: super wide track 1250mm
- ❑ Convenient loading: side sliding door with the super large door opening 1100 × 1260 mm, tail gate with the super large door opening 1400 × 1320, free in and out for large cargoes
- ❑ 8 fixation hook-cargo box side wall fixing
- ❑ 195/75R16 tire is the largest among the peer vehicle models



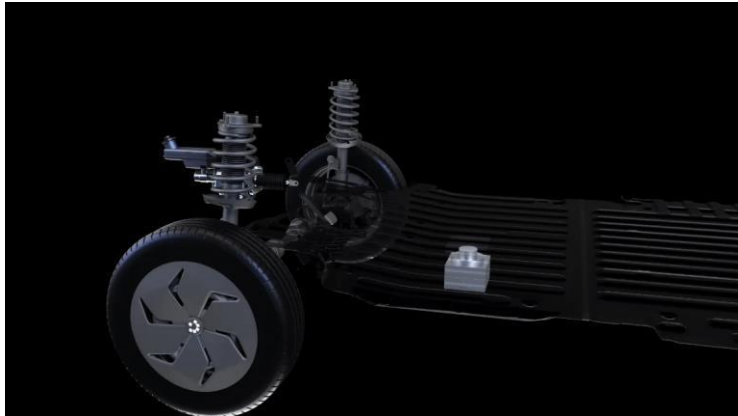
- ❑ CATL liquid cooling and heating battery



- ❑ cage cabin design, 1500Mpa super high-tensile steel, super high-tensile long beam+anti-collision beam



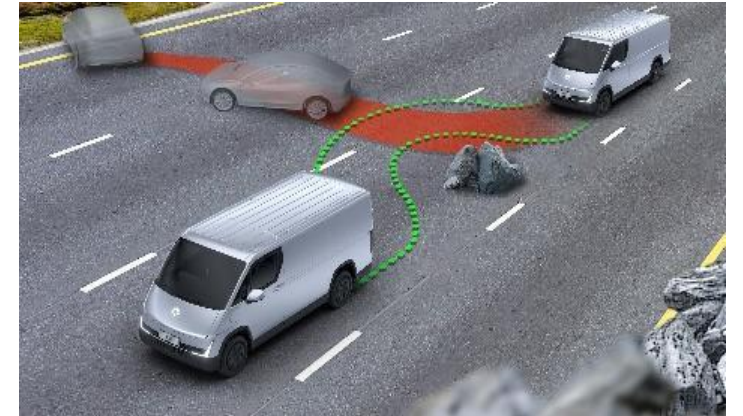
- ❑ 8-in-1 efficient electric drive
- ❑ 94.5%High efficiency system efficiency



- ❑ EHB braking distance down by 9%-16%;no decay in the high altitude, low voltage, long ramp



- ❑ design according to the highest standard and EU regulations, high quality and safe vehicle body



- ❑ ESC vehicle stability system ,rollover accident rate down by 70%